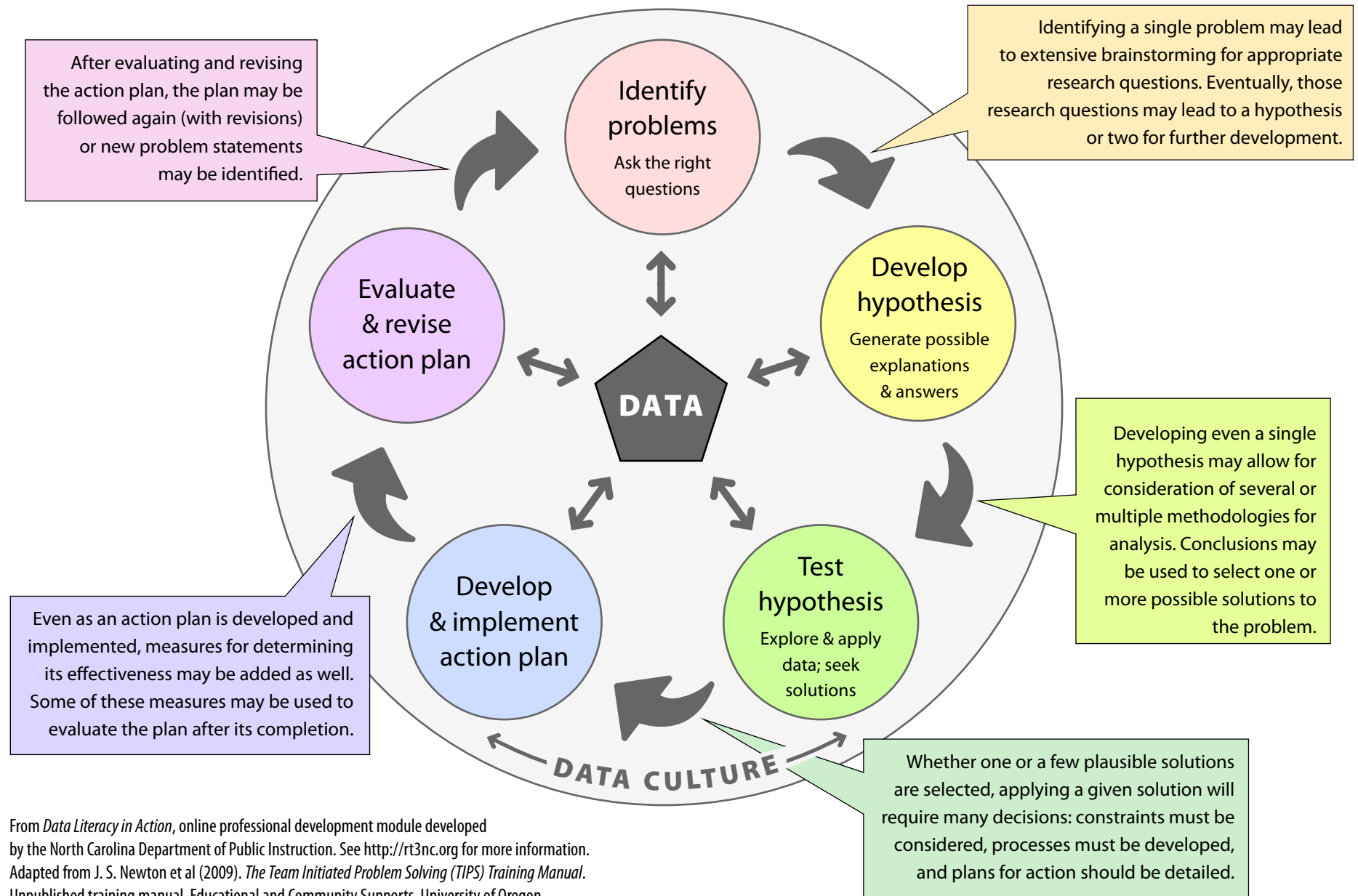


# THE DATA INTERPRETATION CYCLE IN A SCHOOL

Each step of the data interpretation cycle is a process in itself. Data informs and is collected at every stage, and the entire process takes place within the school's culture of data.



From *Data Literacy in Action*, online professional development module developed by the North Carolina Department of Public Instruction. See <http://rt3nc.org> for more information. Adapted from J. S. Newton et al (2009). *The Team Initiated Problem Solving (TIPS) Training Manual*. Unpublished training manual, Educational and Community Supports, University of Oregon.